



# Readin' Both Pages

Vol. 5, No.1

*A membership publication of the Sail, Power & Steam Museum*

FALL-2011

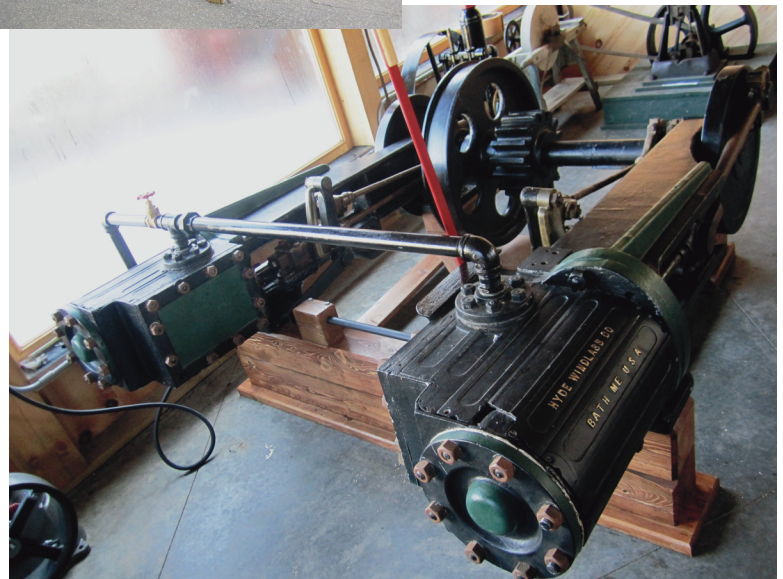
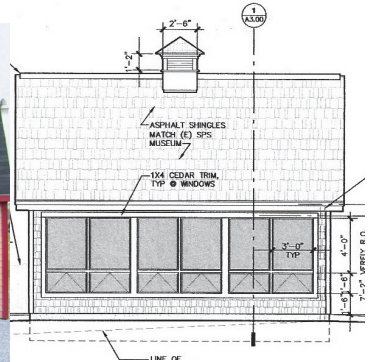
## Our New Engine House Has Come to Life

*Volunteers, under our project manager Dennis' watchful eye, have completed the post & beam building. The antique machinery is running and we are open for business.*

**KA chug, paush, chug, chug, wheeze, ka-chug, paush, ch** - If you've never heard the hiss and ahhh of a running 19th century steam machine--The dancing rhythm of a Make 'n Break engine belching a cacophony of symphonic exhaust notes in true 1902 fashion--If you've never seen the smoke rings of a one-lunger breathing horsepower in and out--If you've never heard the slap, slap, slap of soft leather belting turning a jack shaft to power antique machinery--- Well, here is your chance--

*Come listen!*

**THE SAIL, POWER & STEAM MUSEUM** of South Rockland will be running all of the engines of the new display in our volunteer built, newly dedicated, post & beam Engine House #1.



*And the big one is running smoothly!*



*Getting her ready to run first time in nigh 100 yr.*

The steam engine that hauled schooners, steamers, square riggers, barges and a sundry of great 19th century vessels out of the water on the railway of the Snow Shipyard.

Over 100 years old and two powerful cylinders of grand historical significance which we actually run on a daily basis for the enjoyment of the true steam engine buffs.



# It's a Friendship! It's a donation

In 1965 Carlton Simmons, a Friendship, Maine boat builder started this wonderful 30 ft. Friendship Sloop. Because of health problems, he was unable to complete the project and it was eventually purchased and stored away in a barn for 45 years. The Sail Power & Steam Museum has acquired it from former owner John Lichman through partial donation, and we, with our volunteers, apprentices and the watchful eye of project manager



Dennis Gallant, intend to finish it. It will be a boat building experience for anyone with a desire to learn. Everyone knows these Friendships are some of the most beautiful small sailing craft ever built and, in the society of these sloops, our vessel is number 120 of the fleet of over 300 sail.

We are appealing for donations to complete this little sloop... can you help? Any and all contributions are most appreciated.

## CALLING ALL VOLUNTEERS

*Volunteers of the Sail, Power & Steam Museum are a dynamic and exciting group who share many diverse interests such as nautical history, boat building and steam engines. There are many opportunities for Volunteers-something of interest for every interest.*

The Sail, Power & Steam Museum salutes, recognizes and celebrates our volunteers as well as volunteers at the local, state and national levels. We encourage anyone interested in learning about volunteering to contact the Museum.

America has a proud tradition of neighbor helping neighbor, and today this volunteer spirit is needed more than ever before. Studies show that people who volunteer their time live longer, healthier and happier lives, and the satisfaction of a job well done is always an enjoyable feeling. Many thousands of retired individuals have found that they are not only welcomed, but needed in the carrying out of the day to day workings of organizations worldwide.

Learn the fine points of boat building-come help complete our 30 foot Friendship Sloop and get her sailing on the Bay.



**THE SAIL, POWER & STEAM MUSEUM**  
75 Mechanic Street ~ The Old Snow Shipyard Rockland, Maine 04841  
207-701-7627 • [www.sharpspointsouth.com](http://www.sharpspointsouth.com)  
[www.sailpowerandsteammuseum.org](http://www.sailpowerandsteammuseum.org)  
email: [ssmuseum@midcoast.com](mailto:ssmuseum@midcoast.com)



***Kin ya feel the frosties bitin' round your ears?***

AND THE NEW FALL COMES SUDDENLY CRASHING IN WITH A DEDICATED, POSITIVE RUSH, ALL THE TIME EMBRACING A GALE O WIND AND 22 INCHES OF WHITE STUFF ON THE HIGH GROUND—SURPRISE, SURPRISE—and it isn't even Halloween yet. The great heavy frozen lumps of snow try hard to blanket the forsythia poking with desperation through the flakes. The summer lasted well into the fall season and we had plenty to do at the museum- well into November. Busy-- boy I guess. We had 22 formal programs, both educational and musical, we had a Sunday Jamm every blessed week (ex-



cept the one on Easter when I should have been in church), over 20 lobster bakes, each with about 95 hungry, critter devourers under our big tent, and, an evening concert with period brass band with period instruments & dress attended by over 200 and it was positively awesome!

Awesome too was the Windjammer weekend concert with Gordon Bok attended by a dozen of the

Schooner Fleet, all their passengers and about 300 Maine music/schooner lovers basking under the full moon of a magic evening.

When I give 'em a 30 cent tour, so many summa' people from near and far get all fired up when they see all the magnificent treasures found here at the museum that they blurt out in consternation "Captain, this is amazing! You should see what I have in my barn." And I tell 'em, "Hey, let's go look! So, the treasures and curiosities come through the door all the time.

Anyway, let me tell you a line or two about some of the new displays and improvements you'll find at the one & only World Famous Sail, Power & Steam Museum of South Rockland.

Just recently we received two signed half models by John J. Wardwell, Master Builder. For eleven years, J.J. Wardwell was the foreman and master builder at the

Bean Yard in Camden, not only designing and modeling every vessel built there, but taking entire charge of the building of all their vessels and of the George W. Wells. The



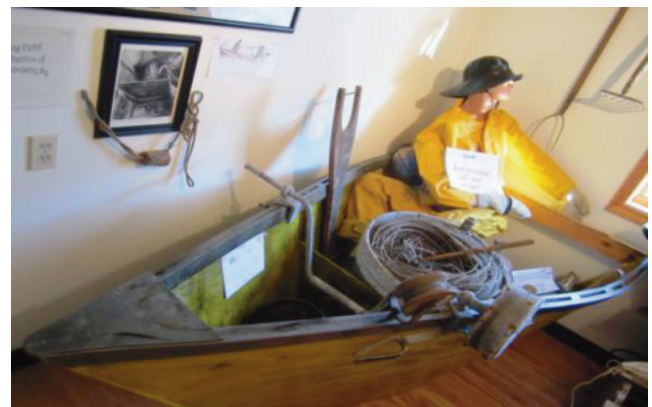
Wells, at her launch in 1900, was the largest sailing vessel in the world and the only six master. She consumed a whole forest of timber to construct her gigantic hull.



J.J. Wardwell, an artist, a recognized master of his trade,

designed this little schooner in the 1930s just before retiring at 90 years. It's not the Wells but they are two mighty pretty hulls...

My good friend and author of many classics, Joe Garland, sailed on to the great ocean in the sky this summer and I went to Gloucester to his services. We had sailed together on my old Schooner Adventure and he was very instrumental in finding a good home for the vessel when I retired in 1988. He has written some of the most treasured and exciting, true histories of the Grand Banks fishermen found anywhere and was a pillar in that community of



Gloucestermen. While there, I went aboard my grand old schooner and came back with some items for the museum fishing display. One was a tub o' trawl and another was a section of planking and frame of Adventure's hull left over from her rebuild. It shows distinctly the trunnel fastening and the method of construction of these grand vessels. The tub went into the new dory, lovingly built by volunteer, Gil, to demonstrate hand trawling with a line over a mile long. Thanks to Capt. Dan West, the dory is now chocker-block full with the hooks, line, dory roller, water jug, hard tack box and all paraphernalia to land a great charge of fish.

# A NEW DISPLAY OF NAVIGATIONAL INSTRUMENTATION

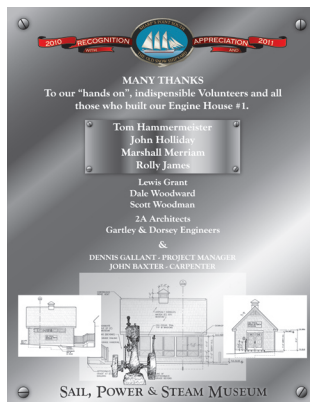


You'll just have to stop in and see the amazing collection of ancient navigation tools displayed in our new "hands on" chart table. They are for the curious to pick up, handle, experiment with and actually plot a course on a modern chart. There are a sundry of astrolabe, the first compass, a cross staff, back staff, chip log and many charts of bays and sounds around New England. Captain John Flint has donated a learning program that fits into the scheme of this display and allows us a great learning tool for the novice mariner.

My wife, Meg, and I invite you to experience your Museum.

*Captain Jim and Meg Sharp*

## *We have so much pride in the new engine house*



and all the other new things in this museum that we just can't get over the fact that our volunteers do so much for us. They have even hooked up the steam engines to a big air tank so we actually run all the steam displays—including the huge two cylinder winch engine that ran

the haul-out railway for the Snow Shipyard in the 19th century. This incredible engine hauled all the three and four masted coasting vessels out of the water for repairs. When they repowered the winch engine, they cut this one up with a torch and tossed it into the mud for about 50 years. Our crew welded it together and restored it to running condition. Our Make 'n Break engines are all running as well, their exhausts piped out to the great outdoors.

I'll bet you have never seen a hand-crank outboard motor made from old bicycle parts. It is motivated by the turning of the pedal from her bicycle days. It is quite unique and was invented by a couple of teenagers. Check out the 1902 Waterman—the very first



outboard and a 1908 Evinrude, built only the second year after Ole Evinrude developed the very first practical production outboard.



The 1902 Fairbanks, Make 'n Break I had on my schooner to run the windlass is piped up and running along with a number of other donkey engines on display. Belted off to a large grinding stone is a cunning little vertical, Maine built steam engine. Our plans are to bring a jack shaft from the Farquar just outside the new building and run the old belt-driven machinery just as grandfather did at the mill. Come see!



## *What in the heck is it?*



Did you figure it out?

*Now, you know!  
—it's a Watermelon Hog Oiler—*

## *From our Gift Shoppe*

- High Fashion Hats
- \$20 Donation
- Captain Jim's memories of great times gone by.
- \$20 donation to SPS Museum—order now!
- 207-701-7627



*Newly Published by Down East Books... A great read!*





# Readin' Both Pages

Readin' Both Pages is published two or three times a year, if we can get around to it, by The Sail, Power & Steam Museum, a non-profit organization based in South Rockland, Maine on the shores of Owl's Head Bay. The Sail, Power & Steam Museum was founded in 2007 with a mission to enrich the lives of visitors, volunteers, and the general public through hands-on, interactive, and educational experiences with historically significant sailing, power, and steam driven vessels, ships, and small boats while providing instruction as to their origins, construction, and original commercial and recreational purposes.

A subscription to Readin' Both Pages is a benefit of Museum membership. Membership categories include: Individual (\$25), Family (\$50), Contributor (\$100), Sponsor (\$250) and Benefactor (\$500). For further information on these and other membership categories, as well as the Museum's current schedule of events, please see our website or contact the Museum.

## THE SAIL, POWER & STEAM MUSEUM

The Old Snow Shipyard 75 Mechanic Street Rockland,  
Maine 04841 Phone 207-701-7627 Website:  
sharpspointsouth.com • www.sailpowersteammuseum.org

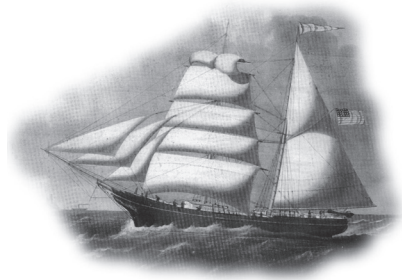
Back issues of Readin' Both Pages are available as PDF files, or in printed format for a small processing fee. Please contact the Museum for further details.

### Board of Directors

Capt. Jim Sharp, Chairman & Founder,  
Meg Sharp, Founder, Ingrid Vansteenbergh, Treasurer.  
Thomas Hammermeister, Member

### Board of Advisors

Gordon Bok, Charles Chiarchiaro, Capt. Steven Cobb,  
Lewis Grant, Perry Holmes, Sam & Susan Manning,  
Rep. Edward Mazurek, Peter Spectre,  
Capt. Orvil & Charlotte Young,  
Mark Seigenthaler,  
Rita & Ron Webster.  
Marshall Merriam,  
Rolly James,  
Dale Woodworth,  
Alan Talbot,  
John Holliday,  
Gil Carlson  
Charles Witherell



# MISSION STATEMENT

To enrich the lives of visitors, volunteers and the general public of the state of Maine through hands-on, interactive, and educational experiences with historically significant sailing, power and steam driven vessels, ships and small boats while providing instruction as to their origins, construction, and original commercial and recreational purposes.

## MEMBERSHIP INFORMATION

### STUDENT \$15

- Basic Benefits

### INDIVIDUAL \$25

(one adult)

- Basic Benefits
- Two free admission passes for guests

### FAMILY/SUPPORTER \$50

(two adults and children under 18)

- Basic Benefits
- Four admission passes for guests

### CONTRIBUTOR \$100

(two adults and children under 18)

- Basic Benefits
- Six admission passes for guests
- 25% discount on admission for accompanying guests

### SPONSOR \$250

(two adults and children under 18)

- Basic Benefits
- Personally autographed copy of "With Reckless Abandon" by Capt. Jim Sharp
- Invitation to special sales and promotions at the Museum Store
- 50% discount on admission for accompanying guests

### BENEFACTOR \$500

(for two adults and children under 18)

- Basic Benefits
- Personally autographed copy of "With Reckless Abandon" by Capt. Jim Sharp
- Invitation to special sales and promotions at the Museum Store
- 50% discount on admission for accompanying guests
- Recognition on Plaque in Museum Library

### BASIC BENEFITS (ALL LEVELS)

One membership card  
(free admission to Museum and special events)  
Subscription to the Museum newsletter, Readin' Both Pages, 10% discount at Museum Store  
Invitations to special events

Back issues of Readin' Both Pages are available.  
Contact SPS Museum at 207-701-7627  
www.sailpowerandsteamuseum.org

# Sail, Power and Steam Museums Grand Reopening - May 1st!

- Want list:
- Cupola with 4 windows for the engine house roof.
  - Deck hardware for a 28' sloop.
  - Working GPS for Navigation Room.

~This is a happening place and~  
~It is, after all, your museum as much as ours~

Come - volunteer for your Maritime Museum!  
Your donations are very much appreciated.



**We need your help - to make this museum a reality.**



**SAIL POWER & STEAM MUSEUM**  
75 Mechanic Street  
Rockland, Me 04841

FIRST CLASS  
POSTAGE  
REQUIRED